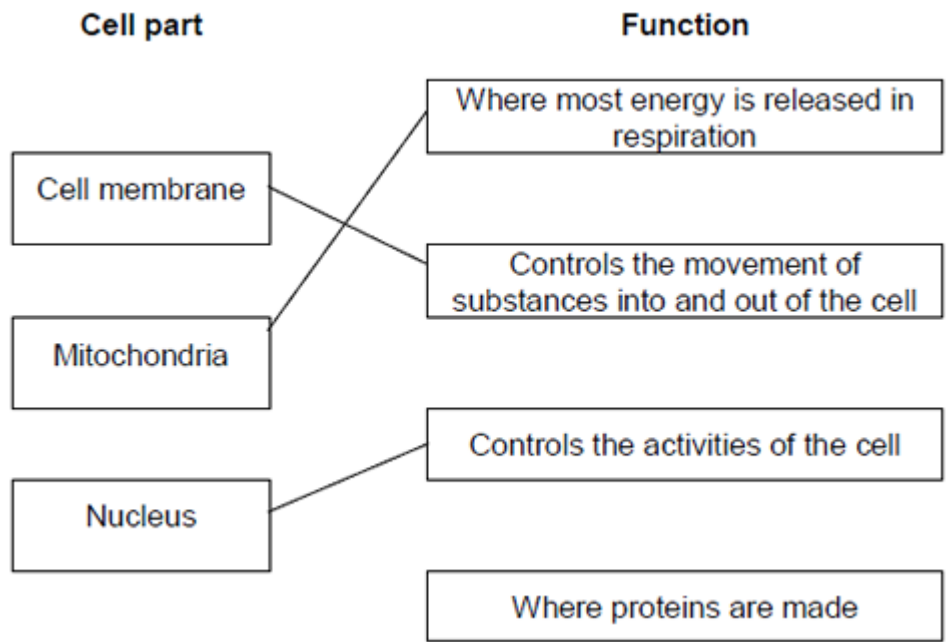


Biology unit 1 homework - Mark schemes

Q1.



(a)

extra lines cancel

3

(b) Cell wall

in either order

1

Chloroplast

allow (permanent) vacuole

1

[5]

Q2.

(a) (i) **A** – (cell) wall

1

B – cytoplasm

1

C – plasmid

1

(ii) bacterium cell has cell wall / no nucleus / no mitochondria / plasmids present

accept its DNA / genetic material is not enclosed / it has no nuclear membrane

it = bacterium cell

accept converse for animal cell

ignore flagella

1

(iii) any **one** from:

- chloroplast

- *ignore chlorophyll*
(permanent) vacuole

1

Q3.

(a) chromosomes

1

(b) diagram showing four separate chromosomes two long and two short
(as in diagram 1)

allow each chromosome shown as two joined chromatids
*do **not** allow if chromosomes touching each other*

1

Q4.

(a) any **two** adaptations with linked descriptions from:

- many alveoli to provide a large surface area
- good blood supply to maintain steep diffusion / concentration gradient
- thin walls so gases do not have far to diffuse / travel
- well ventilated to maintain steep diffusion / concentration gradient

1 mark for adaptation and 1 mark for linked description
*allow to collect oxygen **or** to bring carbon dioxide to lungs*

4

Q5.

(a) diffusion

1

active transport

1

1

Q6.

(a) a tissue

1