

Biology unit 2 homework - Organisation

For each of the questions below: -

Highlight the command word if there is one & annotate what the command word means. - Answer the question!

Q1.

- (a) Complete the table to show whether each structure is an organ, an organ system or a tissue.

For each structure, tick (✓) **one** box.

Structure	Organ	Organ system	Tissue
Stomach			
Cells lining the stomach			
Mouth, oesophagus, stomach, liver, pancreas, small and large intestine			

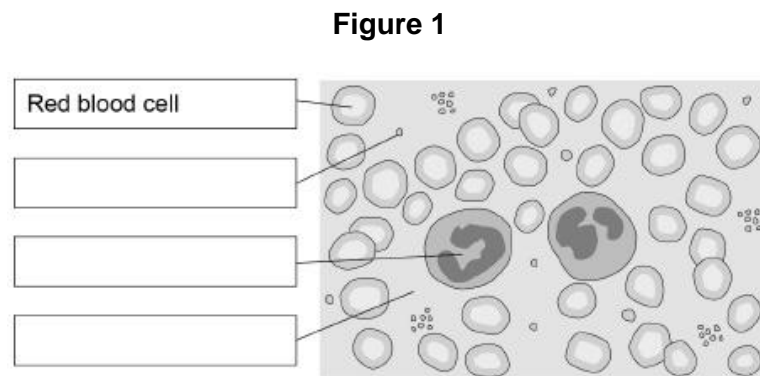
(2)

(Total 2 marks)

Q2.

Figure 1 shows an image of blood viewed with a microscope.

- (a) Label **Figure 1**.



(3)

Q3.

- (a) Complete the table below.

Part of the blood	Function
	Carries oxygen around the body
	Protects the body against infection
Plasma	

(3)

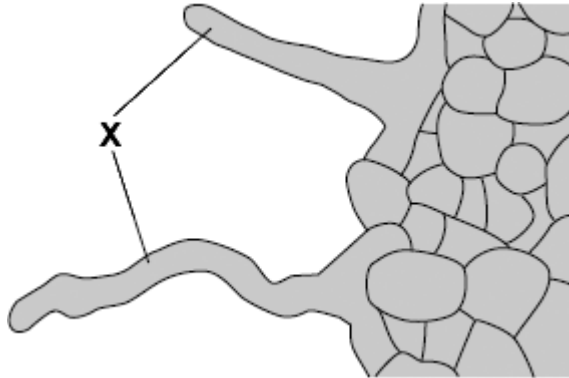
Biology unit 2 homework - Organisation

For each of the questions below: -

Highlight the command word if there is one & annotate what the command word means. - Answer the question!

Q4.

The diagram shows part of a plant root. A large number of structures like the ones labelled **X** grow out of the surface of the root.



- (a) (i) What is the name of structure **X**?

Draw a ring around **one** answer.

root hair

stoma

villus

(1)

- (ii) Name **two** substances which structure **X** absorbs from the soil.

1. _____

2. _____

(2)

- (b) The substances in (a)(ii) are transported from the roots to the leaves. Carbon dioxide also enters the leaves.

Draw a ring round the correct answer to complete each sentence.

- (i) Carbon dioxide enters leaves through

alveoli.
stomata.
villi.

(1)

- (ii) Carbon dioxide enters leaf cells by

active transport.
diffusion.
reabsorption.

(1)

Biology unit 2 homework - Organisation

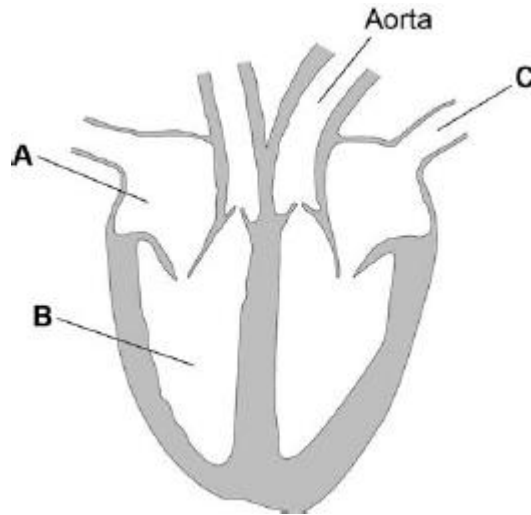
For each of the questions below: -

Highlight the command word if there is one & annotate what the command word means. - Answer the question!

Q5.

Figure 1 shows a diagram of the human heart.

Figure 1



- (a) Name parts **A** and **B**.

A _____

B _____

(2)

- (b) What is the function of blood vessel **C**?

Tick **one** box.

To take blood from the heart around the body

To take blood from the body to the heart

To take blood from the heart to the lungs

To take blood from the lungs to the heart

(1)

- (c) On the diagram, label the **pulmonary artery** and the **vena cava**

(2)

Biology unit 2 homework - Organisation

For each of the questions below: -

Highlight the command word if there is one & annotate what the command word means. - Answer the question!

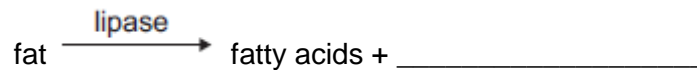
Q6.

Lipase is an enzyme that digests fat.

- (a) (i) Complete the equation to show the digestion of fat.

Use the correct answer from the box.

glucose	glycerol	glycogen
---------	----------	----------



(1)

- (ii) Name **one** organ that makes lipase.

(1)

Q7.

- (a) Diagram 2 shows the appearance of each surface of the leaf as seen through a microscope.

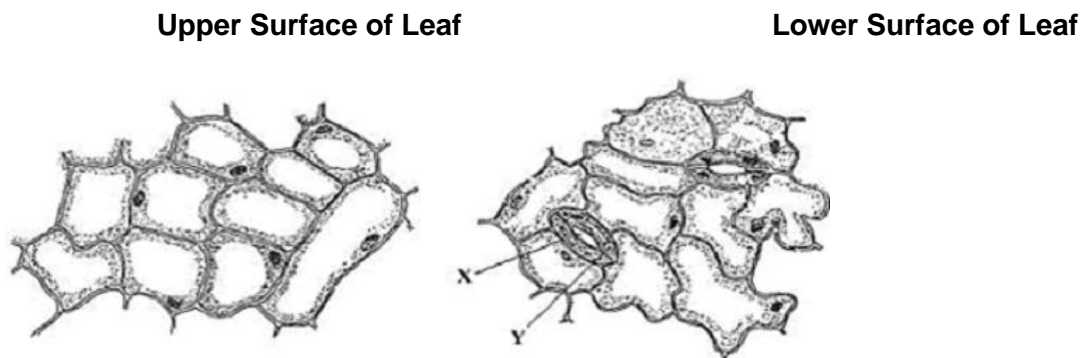


Diagram 2

- (i) Name space **X** and cell **Y**.

X _____

Y _____

(2)